



Update to the Memorial Park Master Plan

**Initial Community Consultation Meeting
Monday December 5th, 2011**

Context

Memorial Park Master Plan Update



- Council has directed that Staff consult with members of the Public to determine whether revisions or refinements to the 1997 Memorial Park Master Plan are warranted;
- Staff are to report back to Council at the conclusion of the consultation process with any recommendations on revisions to the Master Plan;
- The update to the Master Plan will establish new budget estimates and time table for the completion of any projects. This information will be reflected in 2012 + Capital Forecast for the Town

Context

Memorial Park Master Plan Update



- Memorial Park, for the purposes of this review, is comprised of approximately 49 acres of land. The Park is framed by the downtown core to the north, and, residential neighbourhoods to the east, west and south;
- Land ownership within the Park is controlled by the Town and the Toronto Region Conservation Authority (TRCA). Lands owned by the TRCA are situated adjacent the Stouffville Creek, generally described as north of Sommerville St., and, south of Park Drive;

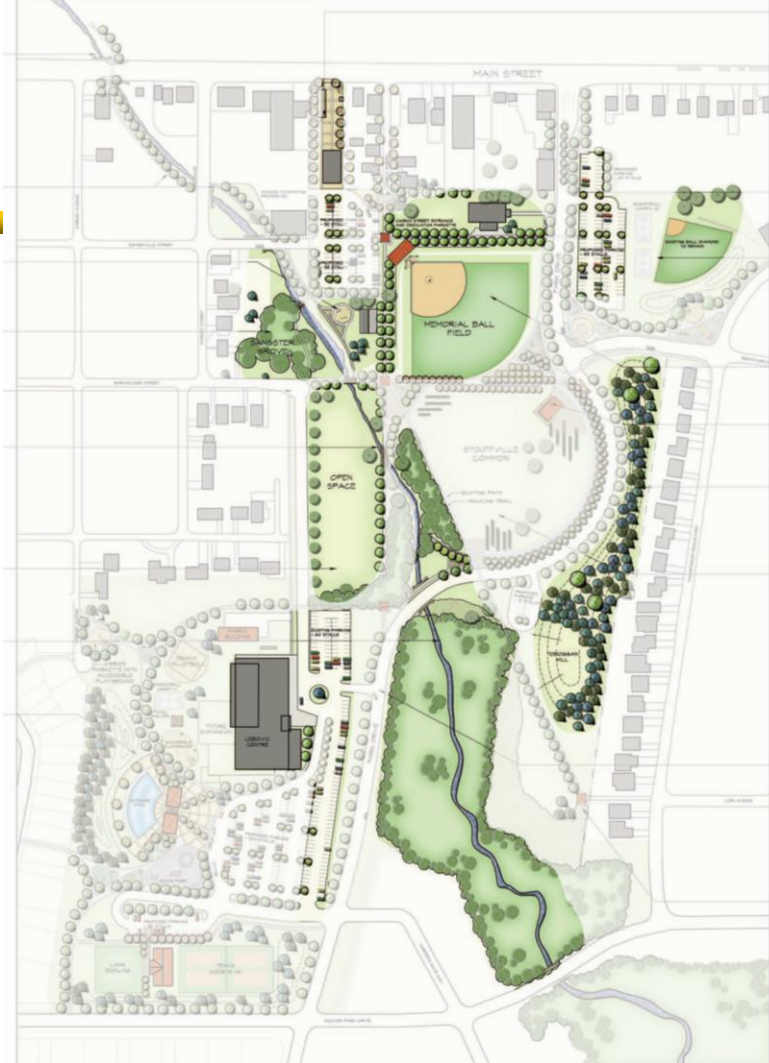
Background

Memorial Park Master Plan Update



- During the time period of 2005 to 2007 the Town conducted extensive public consultation to assist in developing a Master Plan for Memorial Park;
- June 2007 Council adopted the Master Plan for Memorial Park which created a mixture of recreational and leisure opportunities;
- Future capital budgets and the capital forecasts included aspects of the Park redevelopment program consistent with the Master Plan;
- Components of the Master Plan have been constructed;





Background

Memorial Park Master Plan Update



- In January 2011 Town Council submitted a Grant application to the Federal Government under the Enabling Accessibility Fund (EAF) program. The Grant represented funding up to 75% of expenditures to a maximum contribution by the Federal Government of \$3 million.
- The EAF program envisaged four season development of leisure and recreational facilities adjacent the W-S Public Library / Lebovic Leisure Centre;
- In February 2011 Council adopted the position of constructing a new outdoor pool adjacent the “EAF program area” as part of the 2011 Budget deliberations

Background

Memorial Park Master Plan Update



- During the late summer of 2011 the Town was advised that the Municipality did not receive funding support for the EAF Grant request;
- The framework of the original scope of facilities proposed under the EAF project and the new outdoor pool have been identified as a capital project in the Ten Year Capital Forecast for delivery in 2013 as set out in the draft 2012 Budget;
- The 2012 Operating & Capital Budget and the Ten Year Capital Forecast will be considered by Council on January 24th, 2012 at 9:00 am

Circulation and Parking - immediately adjacent to the park plaza, 10 barrier-free parking stalls are shaded by parking islands and provide easy access into the park. Approximately 89 parking stalls (in addition to the future 43) are accommodated in the project. Hard surface pathways radiate out from the plaza and connect to the various features. Cycling/walking paths also connect the outer corners of the park to the sidewalks and park features. Lighting is proposed in the parking lots, splash pad and plaza area. The park program can accommodate future parking lots to the north, central portion and south as future needs dictate.

Landscaping - gentle berms (approximately 1.5m high) and plantings are proposed around the perimeter of the park to create a sense of enclosure, provide shade and act as a visual and sound buffer to adjacent residences.

Outdoor Pool - combines accessibility components, leisure and swimming lanes

Utility / Service Building - this unique year-round structure is designed to be fully accessible, accommodating family, men's and women's change rooms & washrooms that are directly accessible to the outside. A utility and equipment room is to be incorporated into the structure.

Enhanced Splash Pad - 3 splash pods including fully accessible ground mount jets, toys and structures, combination coloured concrete and coloured rubber surfaces. Concrete surface (150' x 65') could include cooling coils for a future refrigerated ice skating rink. Approximately 100 children could enjoy this facility for hours on a winter/ summer basis.

Enhanced Play Pods - clustered together and adjacent to the splash pad, fully accessible play pods provide junior, intermediate and senior play opportunities through rubberized surfacing and equipment selection. Fully accessible swings and other features will be situated within close proximity to circulation paths.

Exercise Circuit - the park can accommodate a circuit for outdoor exercise/play equipment for all ages and abilities, including play/fitness equipment like ellipticals, steppers, etc.

Enhanced Adventure Play - this area combines hard surfaced paths, a sand zone and lawn areas adjacent to the splash pad. Fully accessible play opportunities includes a series of low tables that wheelchairs can "nose" up to, each with a different theme, including sand, water, foam blocks and flat top. This area is also ideal for "imagination play" a system of foam building blocks.

Sensory Garden - this small garden area is adjacent to the main plaza and free play and offers a contemplative, quiet area to stroll or sit in. Sensory stimuli include scent, sound, touch and sight through the use of plants, garden materials and small structures.

Picnic Shelter - 50' x 50' including seating for 50 people.

Free Play - a large open and level lawn area is maintained to provide opportunities for informal play and lounging.



MEMORIAL PARK

CONCEPT DRAWING: MID-SIZED PROJECT COMPONENT
OF THE ENABLING ACCESSIBILITY FUND



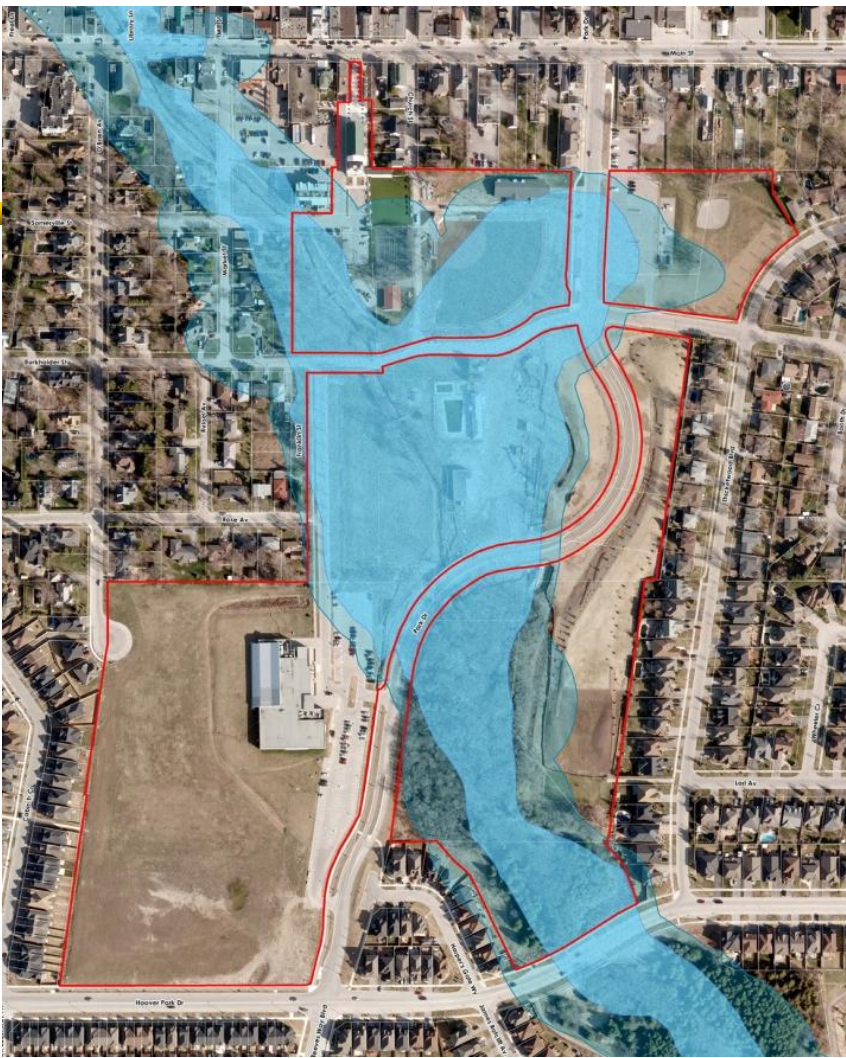
Constraints

Memorial Park Master Plan Update



- In assessing new opportunities for the siting of facilities, activity areas, etc. there are constraints to development that have to be factored into each situation;
- The key constraints for Memorial Park are as follows:
 - + proximity to adjacent residential neighbourhoods (noise, light, traffic impacts, etc)
 - + influence of the floodplain / regulated area of Stouffville Creek
 - + park landholding – limited opportunity to enlarge or modify the current inventory of land
 - + Capital and Operating Budget implications
 - + protect for future expansions of the Library & Leisure Centre





Opportunities

Memorial Park Master Plan Update



- In the assessment of new facilities, activity areas, etc. there are opportunities that should be accounted for in the design or consideration of new uses;
- The key opportunities for Memorial Park are as follows:
 - + proximity to the Downtown Core and its support services
 - + access by vehicles and pedestrian / cyclists
 - + approximate geographic centre of the urban area of Stouffville
 - + large envelope of public controlled lands that can be “divided” into different purposes (ie: neighbourhood vs Town wide; passive vs. active; natural areas, etc.)
 - + infrastructure is present in the Park or adjacent the Park

Community Ideas

Memorial Park Master Plan Update



- What are the key *Guiding Principles* that should be incorporated into the assessment of any new use or activity area within Memorial Park?
 - + design
 - + sustainability
 - + financial
 - + historical context
 - + other
- What is the *Vision* or *Role* of Memorial Park in the context of a Town destination

Community Ideas

Memorial Park Master Plan Update



- Should Burkholder Street, between the current access driveway to the Library / Leisure Centre and Park Drive, be closed up and incorporated into the Park in some fashion?
- Should vehicular access to the Library / Leisure Centre from the current access driveway from Burkholder St be closed up and all traffic to the Facility be directed to Park Drive?

Community Ideas

Memorial Park Master Plan Update



- What projects or activities would you like to see incorporated into the Park?
- What are the priorities of the listed activities
 - + immediate (1 to 3 years)
 - + short term (4 to 6 years)
 - + long term (6+ years)



Next Steps

Memorial Park Master Plan Update



- Comment Sheets are available at the back of the Meeting Room if you wish to provide additional ideas for consideration;
- Town website [www.townofws.ca] – click on the Memorial Park link to follow the progress on the Update to Park Plan;
- A second Community Information Meeting will be hosted in early February 2012 ---- review development scenarios based upon input received tonight;
- Submission of a final report and recommendation to Council in April 2012 on items for consideration associated with the Memorial Park Master Plan Update

Contact Information

Memorial Park Master Plan Update



Rob Raycroft, Director of Leisure & Community Services
Town of Whitchurch-Stouffville
111 Sandiford Drive
Stouffville, Ontario L4A 0Z8

Tel. 905-640-1910 ext. 2290

Email rob.raycroft@townofws.ca