

PLANT LIST

BOTANICAL NAME	COMMON NAME	SIZE/CONDITION	SPACING	QUANTITY*
TREES				
<i>Betula nigra</i> 'Cully Clump'	Heritage River Birch Clump	70 mm cal./W.B. clump form		1
<i>Pyrus calleryana</i> 'Chanticleer'	Heritage River Birch Clump	70 mm cal./W.B.		4
SHRUBS				
<i>Amelanchier alnifolia</i>	Saskatoon Berry	80cm ht./3 gal. pot	175cm	5
<i>Hamamelis virginiana</i>	Virginian Witch Hazel	175cm ht./B&B (multistem)		1
<i>Hypericum kalmianum</i>	St. John's Wort	50cm ht./3 gal. pot	60cm	45
<i>Ilex verticillata</i>	Winterberry Holly	100cm ht./3 gal. pot		1
<i>Rhus aromatica</i>	Fragrant Sumac	80cm ht./3 gal. pot	175cm	9
<i>Sambucus canadensis</i>	Elderberry	80cm ht./3 gal. pot	225cm	3
<i>Taxus x media</i> 'Wardii'	Ward's Yew	60 B&B	80cm	41
PERENNIALS, GROUNDCOVERS, GRASSES AND FERNS				
<i>Asarum canadense</i>	Wild Ginger	1 gal. pot	30cm	236
<i>Asclepias tuberosa</i>	Butterfly Milkweed	1 gal. pot	60cm	25
<i>Athyrium filix-femina</i>	Lady Fern	1 gal. pot	60cm	10
<i>Carex muskingumensis</i>	Palm Sedge Grass	1 gal. pot	40cm	104
<i>Calamagrostis acutiflora</i>	'Karl Foerster'	3 gal. pot	70cm	33
<i>Geum triflorum</i>	Prairie Smoke	1 gal. pot	30cm	187
<i>Hemerocallis 'Stella D'oro'</i>	Daylily spp.	1 gal. pot	40cm	79
<i>Hystrix patula</i>	Bottlebrush Grass	1 gal. pot	30cm	27
<i>Lavendula angustifolia</i> 'Munstead'	Munstead English Lavender	1 gal. pot	40cm	37
<i>Matteuccia struthiopteris</i>	Ostrich Fern	1 gal. pot	60cm	34
<i>Perovskia atriplicifolia</i> 'Little Spire'	Dwarf Russian sage	1 gal. pot	60cm	51
<i>Polemonium reptans</i>	Jacobs Ladder	1 gal. pot	30cm	63
<i>Rubecckia fulgida</i> 'Goldstrum'	Goldstrum Coneflower	1 gal. pot	60cm	41
<i>Schizachnium scoparium</i>	Little Blue Stem	1 gal. pot	60cm	7
<i>Sorghastrum nutans</i>	Indian grass	1 gal. pot	40cm	41
<i>Sporobolus heterolepis</i>	Prairie dropseed	1 gal. pot	60cm	33
<i>Thelypteris noveboracensis</i>	New York Fern	1 gal. pot	40cm	35
<i>Trillium grandiflorum</i>	White Trillium	1 gal. pot	40cm	40

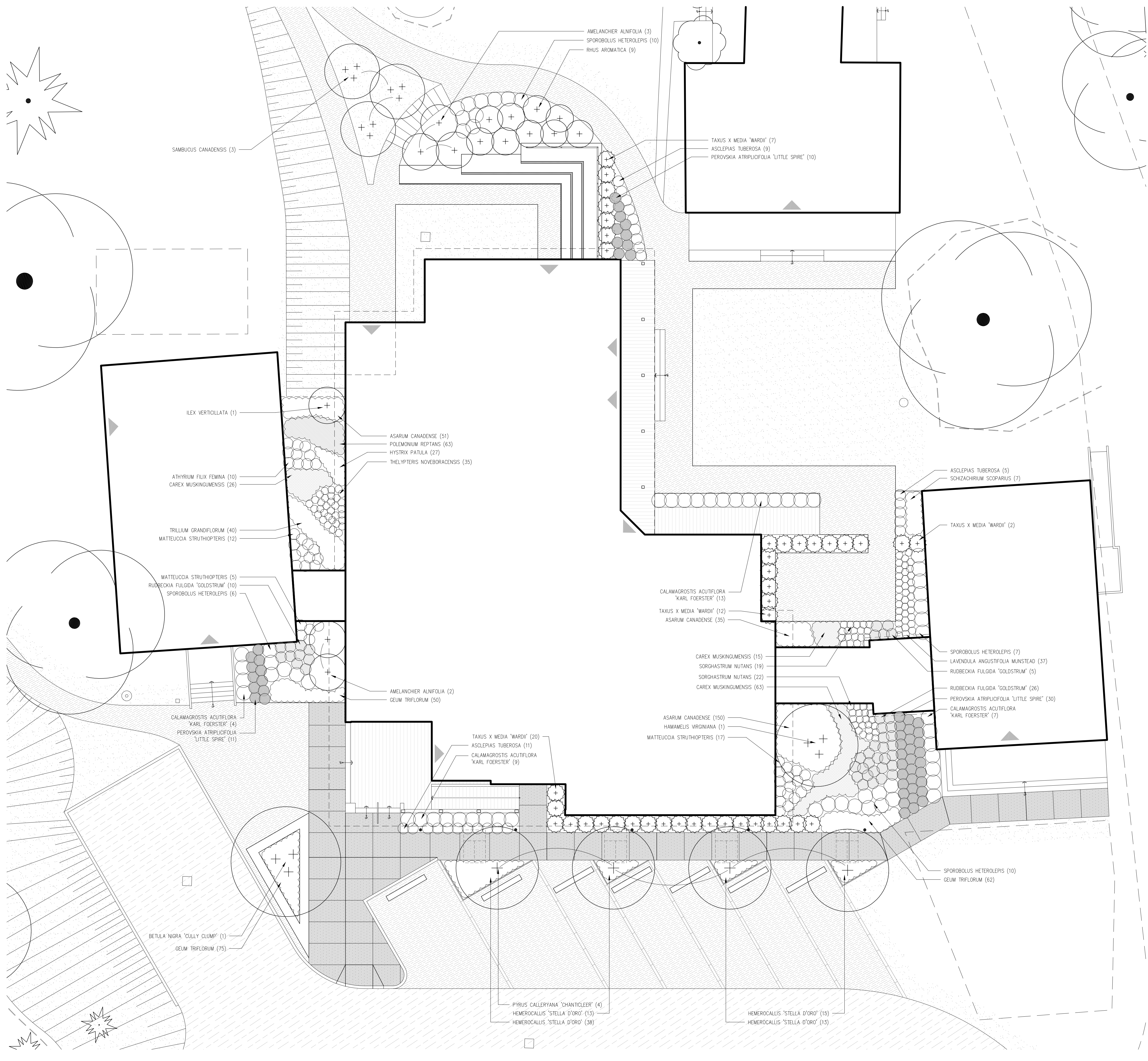
*NOTE:
1) QUANTITIES LISTED AS A GUIDE ONLY. CONTRACTOR TO PROVIDE PLANTS IN SUFFICIENT QUANTITIES TO COMPLETE WORK AS SHOWN ON DRAWINGS.

PLANT MATERIALS:
INSTALL PLANT MATERIALS TRUE TO NAME, SIZE, GRADES, AS SPECIFIED AND CONFORMING TO CANADIAN NURSERY TRADES ASSOCIATION /LANDSCAPE CANADA "GUIDE SPECIFICATIONS FOR NURSERY STOCK" AND THE LANDSCAPE ONTARIO HORTICULTURAL TRADES ASSOCIATION INC. "LANDSCAPE SPECIFICATIONS".
ALL PLANTS SHALL BE NURSERY GROWN. IN THE EVENT OF ANY DISCREPANCY BETWEEN THE PLANTING PLAN AND PLANT LIST QUANTITIES, THE PLANTING PLAN SHALL GOVERN.
MAKE PLANTS AVAILABLE FOR INSPECTION PRIOR TO INSTALLATION. MATERIAL NOT CONFORMING TO SPECIFICATIONS SHALL BE REJECTED AND REPLACED AT CONTRACTOR'S EXPENSE.
APPROVAL OF MATERIALS AT THE SOURCE DOES NOT PROHIBIT THE LANDSCAPE CONSULTANT FROM REJECTING ANY PLANTS WHICH DO NOT CONFORM TO THE LANDSCAPE CONSULTANTS SATISFACTION UPON COMPLETE INSTALLATION.
SUBSTITUTIONS MUST BE APPROVED, IN WRITING, BY THE LANDSCAPE CONSULTANT PRIOR TO DELIVERY OF MATERIAL ON SITE.
TREES SHALL BE PLANTED BY APPROVED METHODS AND FACED TO GIVE BEST APPEARANCE. STAKE TREES UPON PLANTING AS DETAILED.

BED PREPARATION:
TREE PITS AND PLANTING BEDS SHALL BE BACKFILLED TO THE SPECIFIED DEPTHS WITH:
6 PARTS OF SANDY LOAM
2 PARTS WELL ROTTED WEED-FREE MANURE
1 PART OF FINELY PULVERIZED CANADIAN PEAT MOSS
1 PART OF WELL-ROTTED FARM MANURE AND APPLY "AGRIFORM" 20-10-5 TABLETS (OR APPROVED EQUAL) TO MANUFACTURER'S SPECIFICATIONS
TREE PITS AND SHRUB BEDS MUST BE CONSTRUCTED WITH SOIL SAUCERS, MULCH AND SUBSURFACE DRAINAGE AS DETAILED.
SHRUB BEDS MUST BE INSTALLED AS A CONTINUOUS FORM, APPROVED BY THE LANDSCAPE CONSULTANT AND FASHIONED TO ALLOW PROPER DRAINAGE ON SLOPED AREAS.
MULCH TO BE SHREDDED BARK MULCH AS SPECIFIED..

MAINTENANCE:
MINIMUM MAINTENANCE OF ALL LANDSCAPE AREAS IS REQUIRED TO OBTAIN THE TOWN'S FINAL COMPLETION CERTIFICATE AS ISSUED BY THE LANDSCAPE CONSULTANT.
MAINTENANCE SHALL INCLUDE:
-PROPER IRRIGATION TO ENSURE OPTIMUM GROWTH OF TREES AND SOD
-GRASS MOWING TO MAINTAIN HEIGHT OF 50mm
-CULTIVATION AND WEEDING OF TREE PITS AND PLANTING BEDS
-INSECT AND DISEASE CONTROL
ACCEPTANCE:
WORK WILL BE ACCEPTED BY THE TOWN UPON COMPLETION OF WORK AND NOTED DEFICIENCIES PROVIDED THAT ALL PLANT MATERIAL IS ALIVE AND IN A HEALTHY, VIGOROUS GROWING CONDITION.
A WRITTEN PERFORMANCE ACCEPTANCE CERTIFICATE FOR THE PROJECT SHALL SERVE AS THE START OF THE GUARANTEE PERIOD.

GUARANTEE:
ALL PLANT MATERIALS AND SPECIFIED LANDSCAPE WORKS SHALL BE GUARANTEED FROM THE DATE OF THE PERFORMANCE ACCEPTANCE CERTIFICATE ISSUED BY THE TOWN FOR THE PERIOD NOTED IN THE SITE PLAN CONTROL AGREEMENT. PLANTS WHICH DO NOT SURVIVE SATISFACTORILY DURING THE GUARANTEE PERIOD SHALL BE REPLACED. ALL WORK SHALL BE INSPECTED AT THE END OF THE GUARANTEE PERIOD, AT WHICH TIME A FINAL COMPLETION CERTIFICATE SHALL BE ISSUED..



LEGEND

- EXISTING TREE TO BE PRESERVED
- TREE PRESERVATION HOARDING
- SOD
- PERENNIALS, GRASSES, FERNS
- PROPOSED DECIDUOUS TREE
- PROPOSED DECIDUOUS SHRUB
- PROPOSED EVERGREEN SHRUB

20010-03-01 TENDER
20010-03-04 BUILDING PERMIT
DATE ISSUED FOR
Project north

E.R.A.
E.R.A. Architects Inc., 10 St. Mary St. Suite 201, Toronto, Canada, M5T 1P9
T: (416) 963-4477 F: (416) 963-8761 info@era.ca www.era.ca

Project
Whitchurch-Stouffville Museum

Address 14732 Woodbine Avenue, Gormley, ON
For Town of Whitchurch-Stouffville
Project no. 04-083-2
Scale 1:100
Drawn by BS
Reviewed by ER
Drawing file

Planting Enlargement plan

Sheet no.
L3

This drawing is the property of E.R.A. Architects Inc. and may not be used or reproduced without expressed approval. E.R.A. is an Engineering, Architecture and Planning firm. The Contractor shall verify all dimensions and levels on site and report any discrepancies to E.R.A. before beginning work. Do not scale from the drawings. Use figured dimensions only. The Contractor is responsible for any changes made to the drawings without E.R.A.'s approval.